

IPDS Client for Windows (P18) - Getting Started Tips

THIS PRODUCT HAS BEEN REPLACED BY [IPDS Client 2005](#) (program code G52).

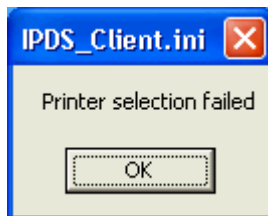
The following information is provided as support for users who already have downloaded the discontinued product (P18).

The program is downloaded as a self-extracting .exe file, which will guide you through the installation of the program. When you install a newer version, new settings options will automatically be added to the Ini-file.

- TRIAL VERSION vs. LICENSED VERSION: Without a license key, the program runs in demo mode. The program is fully functional, however a watermark is printed across each printed page or label. For information on ordering a license key, visit the product portal, where you will also find links to documentation and utilities. www.intermate.com/ipdsclient.

Tips:

Printer selection failed: Sometimes you will receive the following notice when you start the program, particularly the first time:



This happens when there is no printer setting in the Ini-file. Click OK and you will be brought to the front screen:

